



The perfect place to create
your dream home

Custom Build New Homes



Three Bedroom Terraced Home

The Swale • Available Plots: 252, 254 & 256

£350-355,000

- Contemporary 3-bedroom home close-by to green open spaces
- Available with a choice of internal finishes
- High-specification finish including; high-quality kitchen fixtures and fittings as standard with; integrated electric oven, hob, extractor fan, fridge/freezer, dishwasher and combined washer/dryer
- Turfed garden with paved patio area
- Open plan kitchen/dining area
- Downstairs W.C
- 2 x double bedrooms, 1 x single bedroom
- Family bathroom and ensuite for master bedroom
- Fast fibre-optic broadband (subject to supplier's connection)
- Parking for 1 car - For additional parking, please discuss with the Sales team
- Help to Buy available
- 10-year Premier Guarantee Warranty

To find out more about these unique homes and to make
a reservation call 01869 390 009 or email sales@gravenhill.co.uk



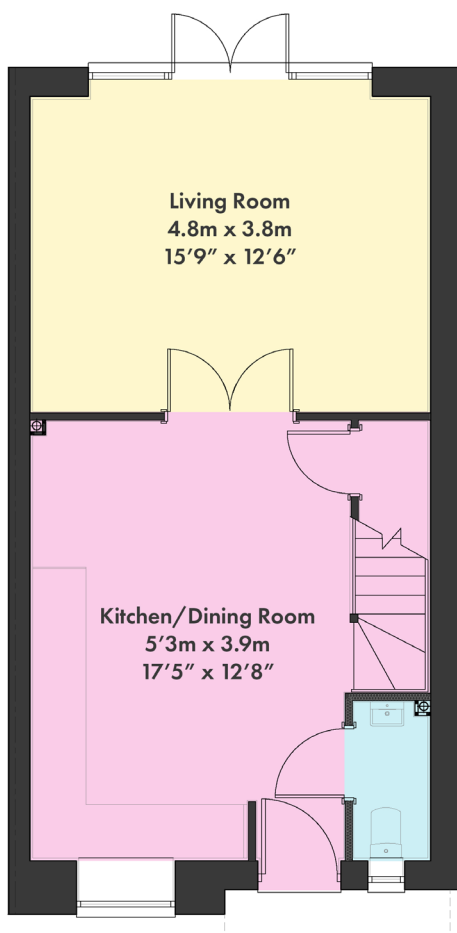
The perfect place to create
your dream home

Custom Build New Homes

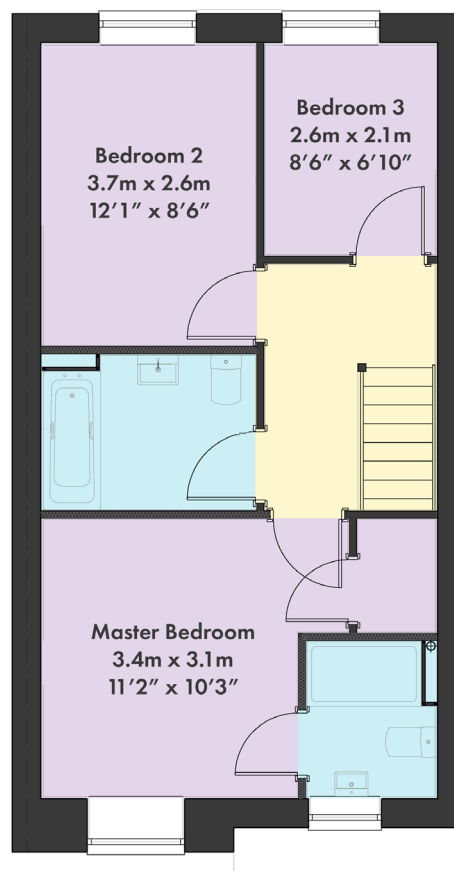
Three Bedroom Terraced Home

Approx gross internal area 955 sq ft / 88.7 sq m

PLOT 252,254 & 256



Ground Floor



First Floor

**New-build, customisable homes built with
quality as standard, by people you can trust.**

To find out more about these unique homes and to make
a reservation call 01869 390 009 or email sales@gravenhill.co.uk



The perfect place to create
your dream home

Custom Build New Homes

Three Bedroom Terraced Home

Approx gross internal area 1162 sq ft / 108 sq m

PLOT 252,254 & 256



Kitchen/Dining Room



Living Room



Family Bathroom

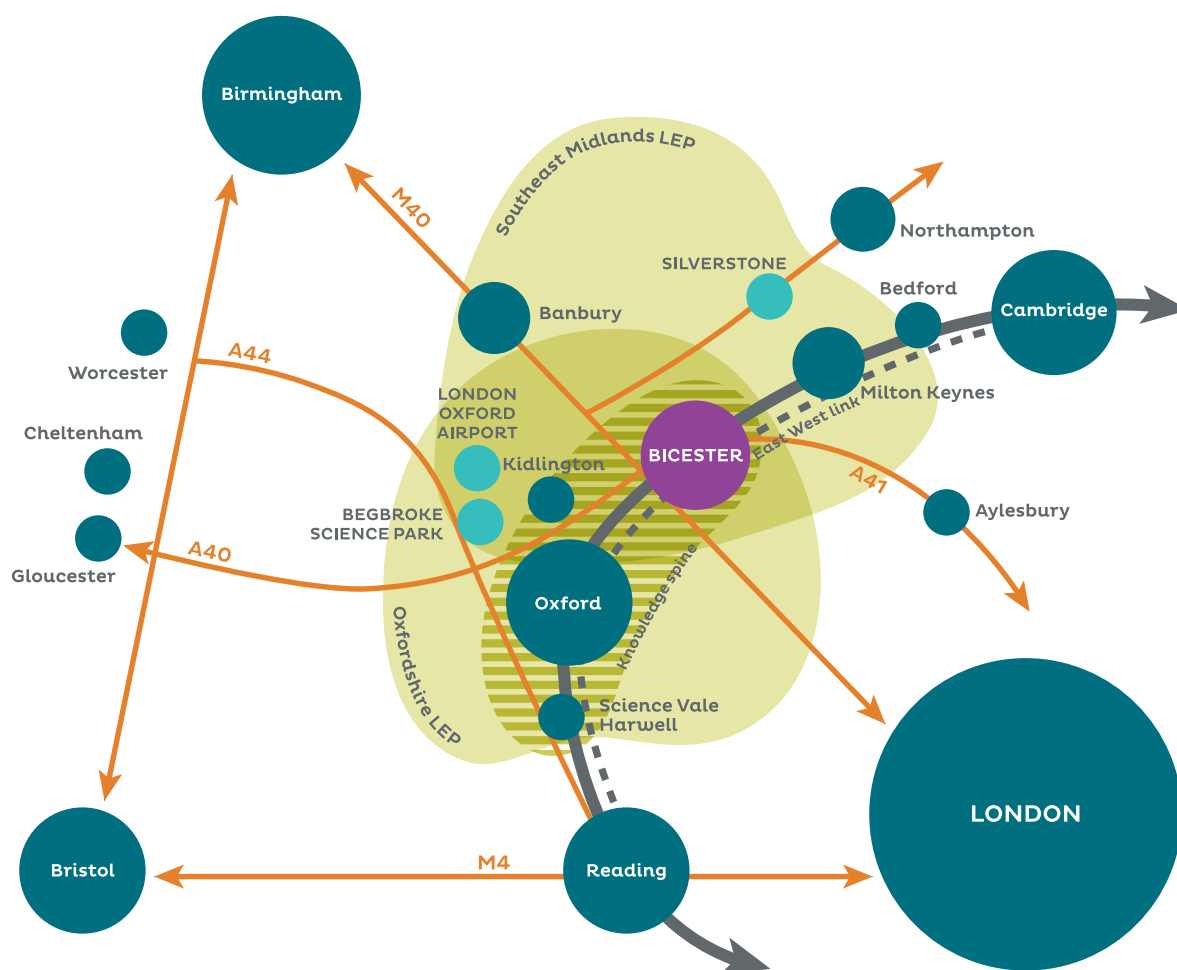


Master Bedroom

Please note: All internal and external CGIs are for illustration purposes only

To find out more about these unique homes and to make
a reservation call 01869 390 009 or email sales@gravenhill.co.uk

An unbeatable location with excellent transport links.



CONNECTIVITY/TRANSPORT

- Local Park and Ride routes direct to Bicester and Oxford.
- Travel to London by train in under an hour.
- Improvement plans for roads to reduce town centre congestion and residential areas.

- | | |
|--------------|--|
| Car | <ul style="list-style-type: none"> • Junction 9 M40 - 3.3 miles / 5 mins • Oxford - 15 miles / 25 mins • Birmingham - 1 hr 6 mins |
| Train | <ul style="list-style-type: none"> • Oxford Parkway - 8 mins • Oxford - 15 mins • London Marylebone - 47 mins • Birmingham - 1 hr 6 mins |