

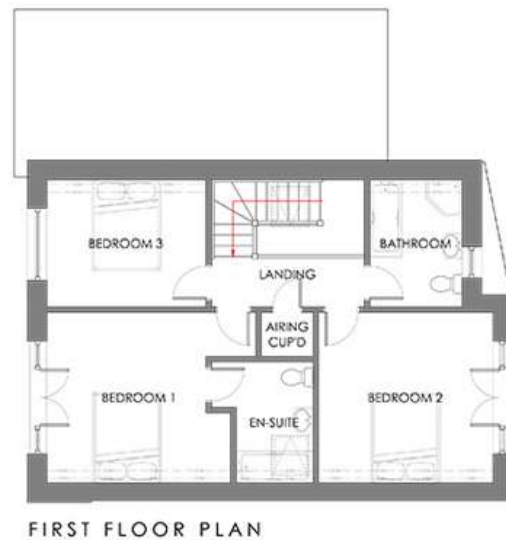


**The Kelmscott**

## PLOT 246

### Three Bedroom Detached Home

<b>Land price:</b>	£193,000
<b>Foundation price:</b>	£43,967
<b>Supplier Home price:</b>	from £187,829
<b>Total price:</b>	from £424,796*
<b>Gross Internal Area:</b>	153 m <sup>2</sup> / 1,649 ft <sup>2</sup>



### Build Your Home with Benchmark Selfbuild

Whether your dream home is a new build, a barn conversion or a complete makeover of an existing building. Benchmark Selfbuild can provide you with stunning bespoke house designs and will assist you in all aspects of your build.



If you would like to live in this design, get in touch with Benchmark Selfbuild:

T: 0800 060 7920 / 01746 762 222 E: [info@benchmarkselfbuild.co.uk](mailto:info@benchmarkselfbuild.co.uk) W: [www.benchmarkselfbuild.co.uk](http://www.benchmarkselfbuild.co.uk)

Graven Hill Mix & Match offers a unique opportunity to fast-track your self-build with pricing upfront and planning permission taken care of.  
For more information about this plot visit: [www.gravenhill.co.uk/plots/246](http://www.gravenhill.co.uk/plots/246)

\* Supplier Home and Total prices are subject to final layout and fixtures and finishes provided by your chosen custom home supplier

**To find out more or to make a reservation  
call 01869 396070 or email [sales@gravenhill.co.uk](mailto:sales@gravenhill.co.uk)**



Bicester, Oxfordshire

# SELF-BUILD WITH PLANNING IN PLACE

**ONE PLOT  
OFFERING YOU A  
CHOICE OF  
TWO APPROVED  
DESIGNS**



**The Chesterton**

## PLOT 246

**Four Bedroom Detached Home**

**Land price:** £193,000  
**Foundation price:** £48,457  
**Supplier Home price:** from £260,000

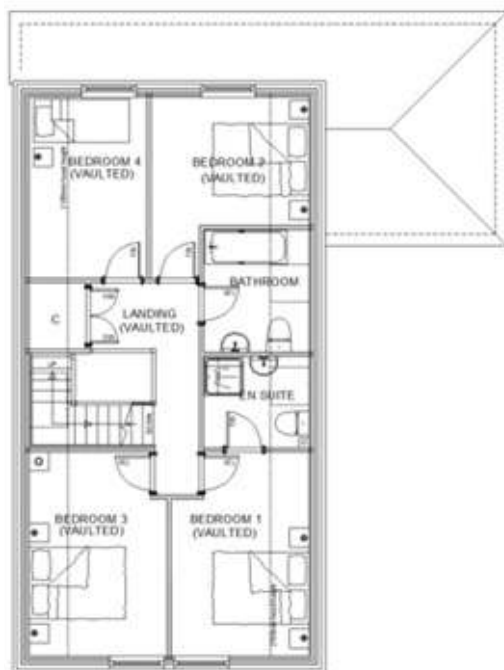
**Total price:** from £501,457\*

**Gross Internal Area:** 159.22 m<sup>2</sup> / 1,713 ft<sup>2</sup>



**GROUND FLOOR**

GROUND FLOOR INTERNAL AREA: 91.64m<sup>2</sup>  
GROUND FLOOR INTERNAL PERIMETER: 45.16m



**FIRST FLOOR**

FIRST FLOOR INTERNAL AREA: 68.18m<sup>2</sup>  
FIRST FLOOR INTERNAL PERIMETER: 35.04m



### Build Your Home with Potton Kingspan

Potton have been helping self-builders for over 50 years and have worked on over 6,500 homes. Ready to assist at any time, their team's in-depth knowledge of self-build will be a valuable resource through your entire build process.

If you would like to live in this design, get in touch with Potton Kingspan:

T: 01767 676 400  
E: karl.harper@kingspan.com  
W: www.potton.co.uk

Graven Hill Mix & Match offers a unique opportunity to fast-track your self-build with pricing upfront and planning permission taken care of. For more information about this plot visit: [www.gravenhill.co.uk/plots/246](http://www.gravenhill.co.uk/plots/246)

\* Supplier Home and Total prices are subject to final layout and fixtures and finishes provided by your chosen custom home supplier

To find out more or to make a reservation call 01869 396070 or email [sales@gravenhill.co.uk](mailto:sales@gravenhill.co.uk)



[www.gravenhill.co.uk](http://www.gravenhill.co.uk)



gravenhillbuild



gravenhillbicester



gravenhillbuild