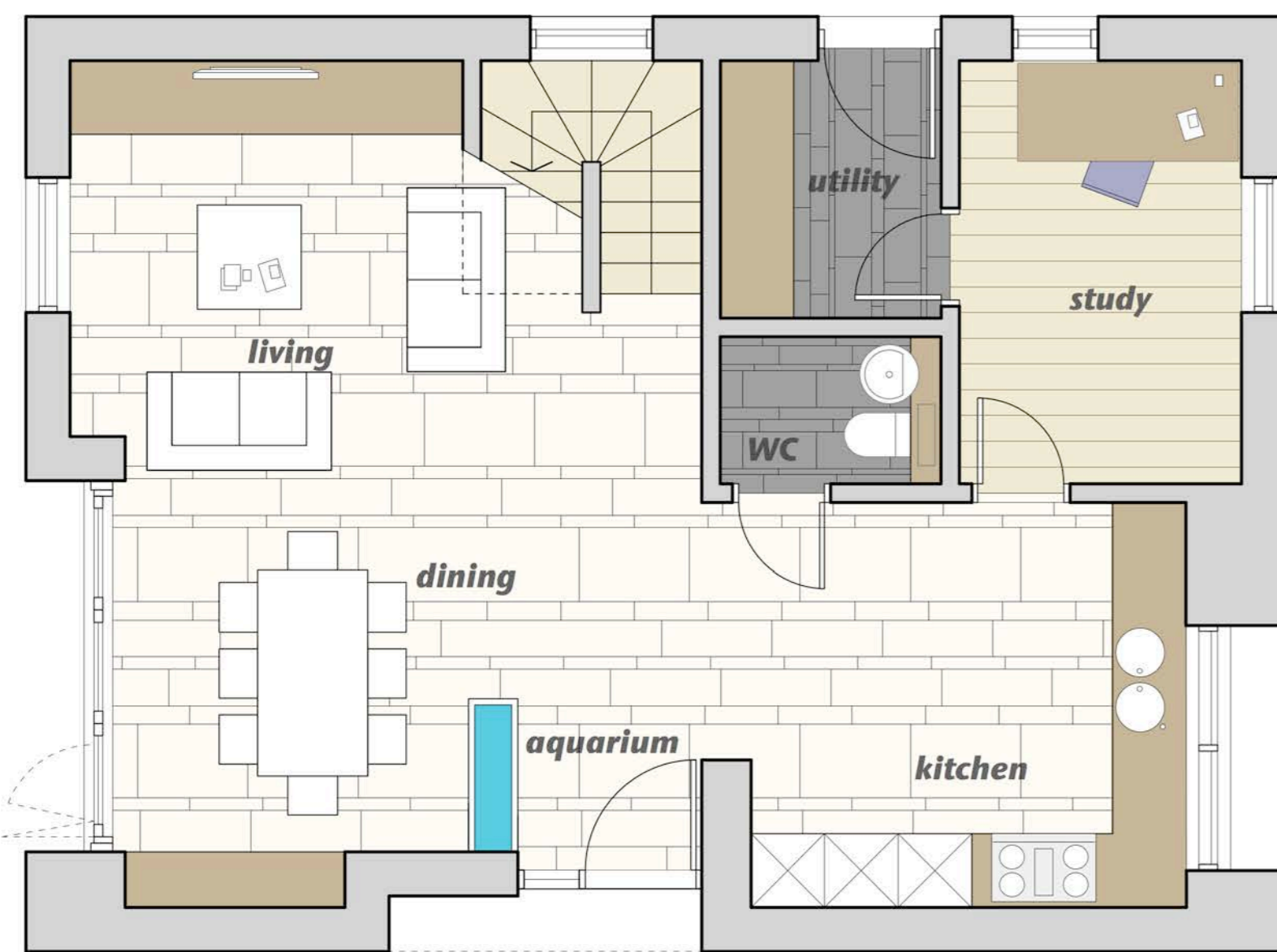
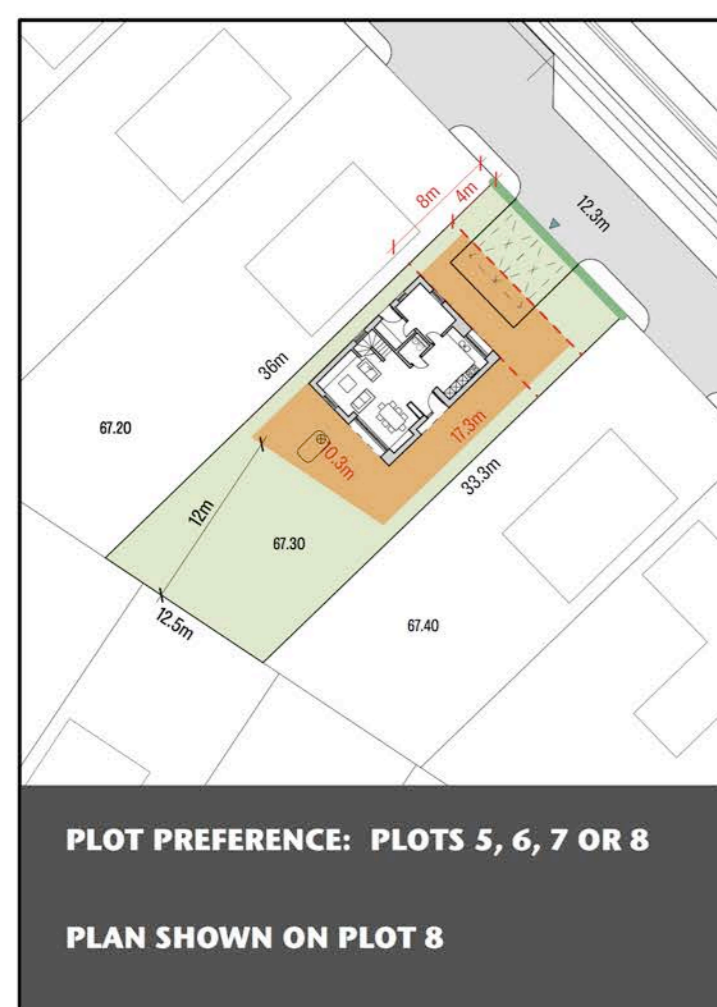


FIRST FLOOR PLAN
1:50



GROUND FLOOR PLAN
1:50



NORTH

SITE PLAN
1:500

MATERIALS

- Dark grey render - Stomix 902.6.3
- Vertical timber cladding infills within panels
- Colorcoat steel roof sheeting - anthracite
- Velux triple glazed solar rooflights (0.83W/m²k)
- Triple glazed solar windows & bifolds (0.63 - 1W/m²k)
- Dijon tumbeld stone (ground floor)
- Reclaimed sleepers - landscaping
- Verisol evacuated tubes (solar thermal)
- Hybrid 4kWh solar voltaic
- 3000l rainwater harvesting tank

- Wall build-up to give U-value of 0.12W/m²k:
 Render/timber cladding on carrier system over
 120 - 150mm Kingspan K5 EWB insulation
 Vapour control membrane
 215mm thk blockwork
 Wet plaster



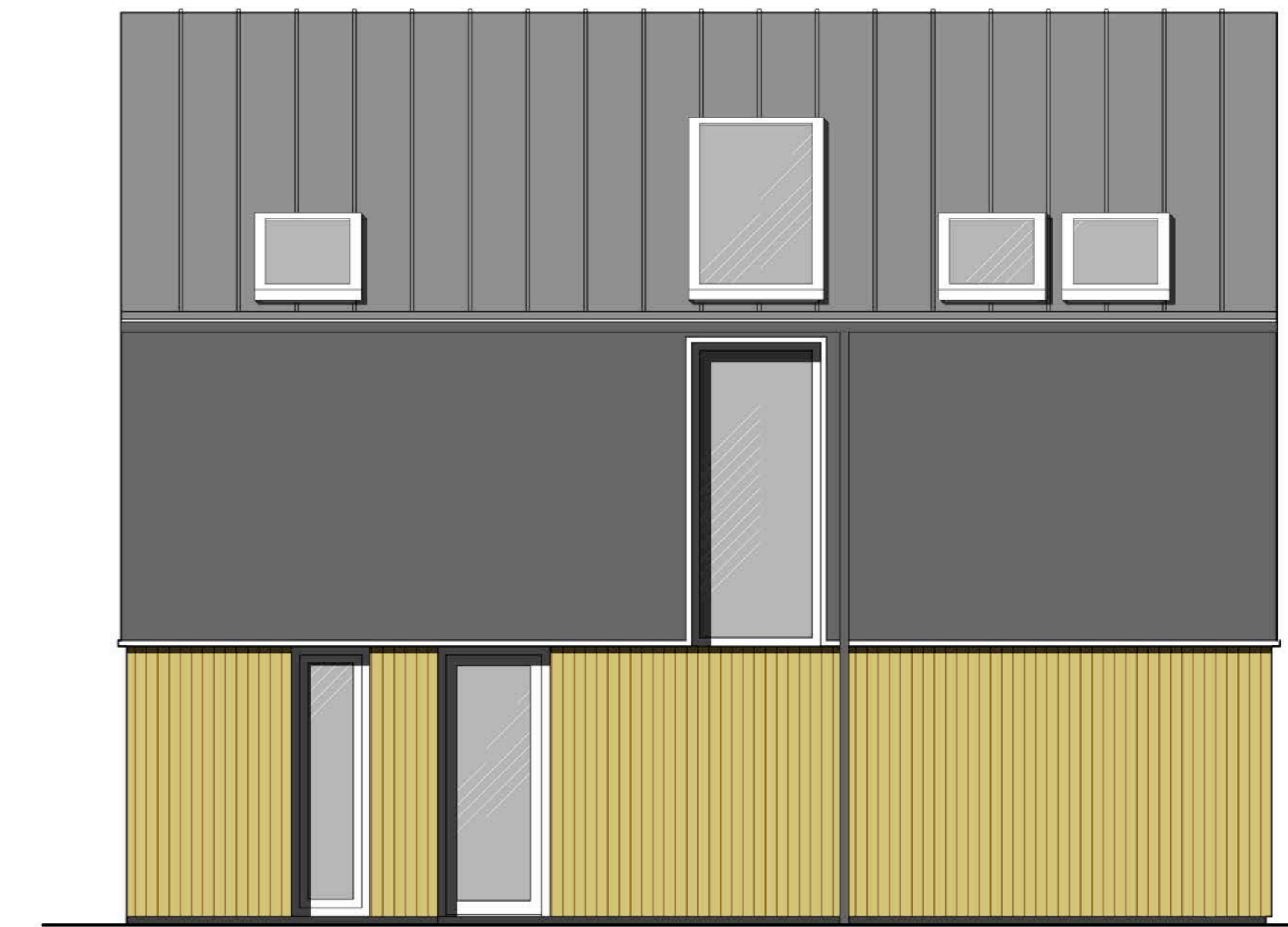
NORTH-EAST ELEVATION
1:50



ENTRANCE ELEVATION: SOUTH-EAST
1:50



GARDEN ELEVATION: SOUTH-WEST
1:50



FLANK ELEVATION: NORTH-WEST
1:50

